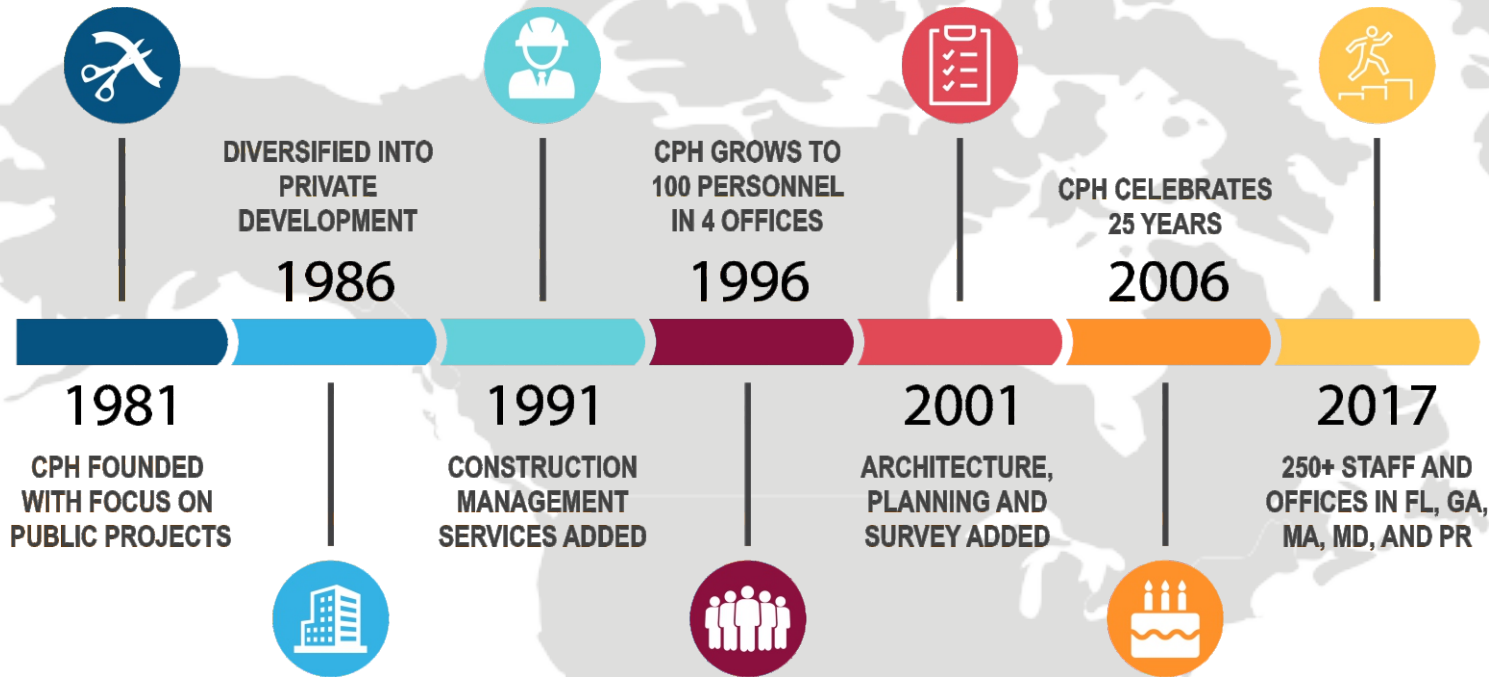


*Architects • Engineers
 Environmental • Landscape Architects
 M/E/P • Planners • Structural
 Surveyors • Transportation/Traffic*

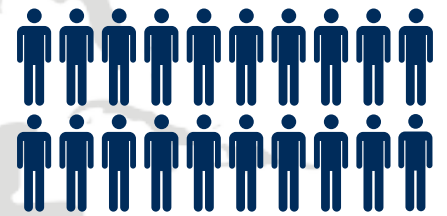


CPH IS AN ESTABLISHED FIRM



put our **PEOPLE** and **EXPERIENCE**

to work for **YOU**



240+ Professionals

Architects, Engineers, Planners, Surveyors, Environmental, Traffic/Transportation Engineers, Inspectors, Structural Engineers, M/E/P Engineers, Landscape Architects, Construction Managers

ENR
TOP 500
DESIGN FIRMS
ENR SOUTHEAST
TOP DESIGN
FIRMS

FULL A&E DESIGN SERVICES

ARCHITECTURE

Architecture • Planning & Urban Design • Due Diligence Studies • Space Programming • Interior Design • Project Management • LEED Analysis & Design • Cost Estimating • BIM/3D Modeling

CIVIL ENGINEERING

Master Planning (Site & Utility) • Site Check Studies • General Civil Engineering • Stormwater/Drainage Design & Studies • Transportation Engineering • Traffic Planning/Engineering • Utility Design • Construction Administration Services

MECHANICAL • ELECTRICAL • PLUMBING

Mechanical Engineering • Electrical Engineering • Plumbing and Fire Sprinkler • Lighting Design • Technology/Fiber Optics • Energy Modeling • Code Compliance • Standby Power Facilities • Emergency Generators • Communication/Data Systems • Security Systems • Analysis of Existing Systems • Energy Conservation Analysis • Life Cycle Cost Analysis • LEED Certification Review • Indoor Air Quality • Facility Condition Assessments • Green Sustainable Design • Energy Audits and Analysis • Water Efficiency Analysis

STRUCTURAL ENGINEERING

Structural Design • Structural Restoration/Retrofitting/Strengthening • Forensic Analysis & Remediation • Seismic Structural Strengthening • Wind Load Structural Strengthening • Historic Restoration • Construction Inspection / Supervision • Threshold Inspection (Special Inspection)

LANDSCAPE ARCHITECTURE • PLANNING

Master / Park Planning • Commercial & Multi-Use Facilities • Greenways & Trails • Waterfront Development • Water Parks / Aquatic Facilities • Nature Trails • Natural Resource Management • Sports Complex Design • Passive & Active Parks

SURVEYING & MAPPING

Design Surveys • Topographic Surveys • Horizontal Control Surveys • High Definition 3D Laser Surveys • Vertical Control Surveys • GPS Surveys • Subsurface Utility Surveying & Mapping • Boundary Surveys • Legal Descriptions • Sketches of Descriptions • As-Built Surveys • Quantity Surveys • Construction Surveys • Computer Mapping • Quality Control/Assurance • Peer Review • Aerial Photography • Property Transactions • Government Infrastructure Projects • Utility Improvements • Plat Review

ENVIRONMENTAL

Impact Assessment and Permitting • Water Resource Assessment and Management • Biological Resource Assessment and Management • Environmental Monitoring

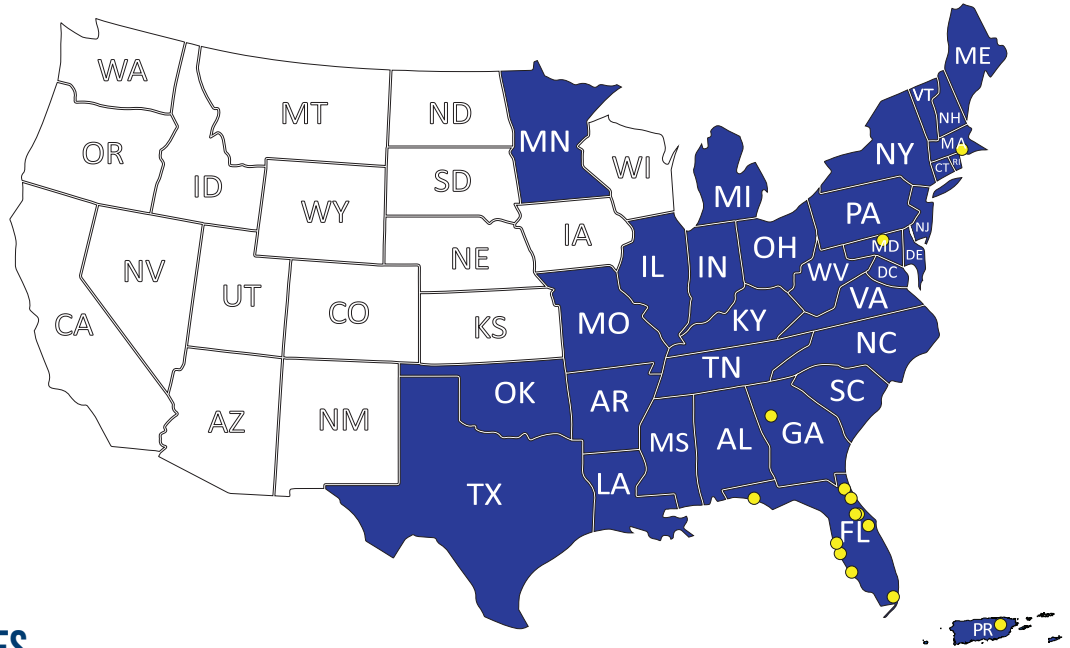
CREATIVE DESIGN SOLUTIONS for development projects

Retail/Commercial • Banks • Multi-Family • Mixed-use • Redevelopment • Office • Hotel/Hospitality • Corporate Interiors • Historic Renovations • Healthcare • Open Space • Housing • Laboratories • Public Complexes • Religious Facilities • Senior Living • Warehouse • Industrial Facilities



www.cphcorp.com

CPH OFFICE LOCATIONS



■ SERVICES MAY VARY BY LOCATION

● CPH OFFICE LOCATIONS

SOUTHERN REGION OFFICES

Sanford

(Corporate Headquarters)

500 W. Fulton Street
Sanford, FL 32771
Phone: 407.322.6841

Jacksonville

550 Belfort Road, Suite 220
Jacksonville, FL 32256
Phone: 904.332.0999

Palm Coast

520 Palm Coast Pkwy SW, Suite 200
Palm Coast, FL 32137
Phone: 386.445.6569

Ft. Myers

2216 Altamont Avenue
Ft. Myers, FL 33901
Phone: 239.332.5499

Orlando

1117 E. Robinson Street
Orlando, FL 32801
Phone: 407.425.0452

Miami

1992 SW 1st Street
Miami, FL 33135
Phone: 305.274.4805

Tampa

5601 Mariner Street, Suite 105
Tampa, FL 33609
Phone: 813.288.0233

Panama City

1031-C W 23rd Street
Panama City, FL 32405
Phone: 850.563.1490

Sarasota

3277A Fruitville Rd, Suite 2
Sarasota, FL 34237
Phone: 941.365.4771

DeLand

101 N. Woodland Blvd., Suite 305
DeLand, FL 32720
Phone: 386.736.4142

Georgia

229 Peachtree Street NE, Suite 1004
Atlanta, GA 30303
Phone: 850.563.1490

Puerto Rico

950 Ponce de Leon Avenue
San Juan, PR 00907
Phone: 787.641.1992

NEW ENGLAND REGION OFFICE

Massachusetts

550 N. Main Street, Suite 6
Attleboro, MA 02703
Phone: 508.659.7020

MID-ATLANTIC REGION OFFICE

Maryland

518 S Camp Meade Rd., Unit 2
Linthicum Heights, MD 21090
Phone: 301.918.2662

1.866.609.0688

WWW.CPHCORP.COM

